

# TE KUITI

## PEDESTRIAN BRIDGE LANDINGS DRAFT DEVELOPED CONCEPT DESIGN

JULY 2020



**DRAFT**

## Revision History

Revision No.	Prepared By	Description	Date
A	Chris Judd	Draft Developed Concept Design for Client Review	09.07.20
B	Jessica Shatford / Chris Judd	Draft Developed Concept Design for consultation	30.07.20

## Document Acceptance

Action	Name	Signed	Date
Prepared by	Jessica Shatford / Chris Judd		30.07.20
Reviewed by	Tom Abbott		30.07.20
Approved by	Annette Jones		30.07.20
on behalf of Beca Ltd.			

This document should be printed double sided at A3.

Images in this document: Unless otherwise noted, drawings, illustrations, photos and other images have been provided directly by Beca. In all other instances, best efforts have been made to reference the image to its original source.

© Beca 2019 (unless Beca has expressly agreed otherwise with the Client in writing). This report has been prepared by Beca on the specific instructions of our Client. It is solely for our Client's use for the purpose for which it is intended in accordance with the agreed scope of work. Any use or reliance by any person contrary to the above, to which Beca has not given its prior written consent, is at that person's own risk.

# INTRODUCTION

In preparation for its District Plan Review in 2018, Waitomo District Council undertook a Town Concept Plan engagement process to understand the community's long-term aspirations for Te Kuiti. Through this process, one of the key issues recognised in Te Kuiti was that the town is currently divided by the railway line, and despite the current pedestrian rail over-bridge providing a physical connection, it does not add to the attractiveness of Te Kuiti. The community highlighted that they wanted a safer railway crossing for pedestrians.

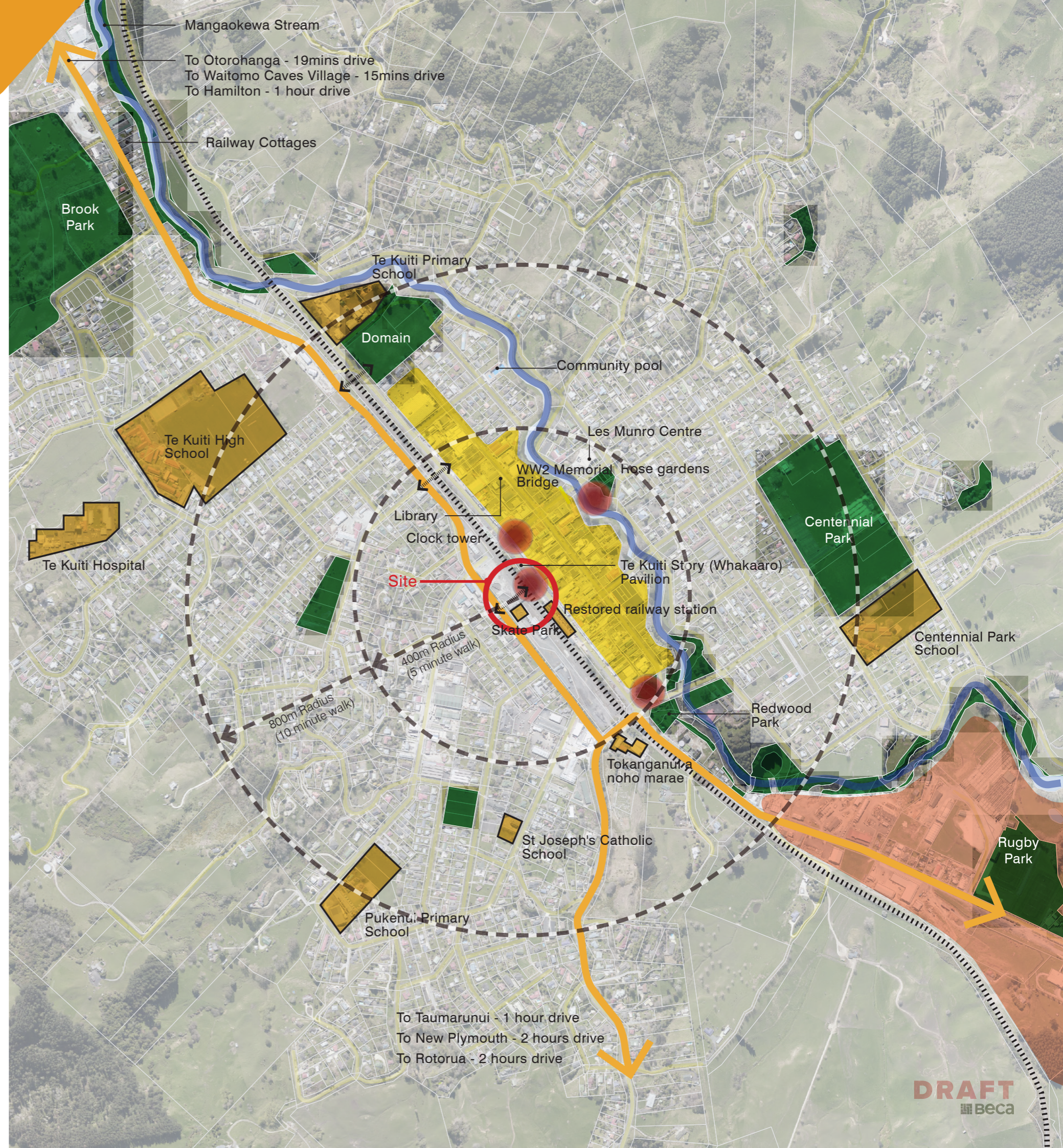
As a result of this feedback, the structural design of a new pedestrian bridge is currently being undertaken to replace the existing bridge. To support the bridge design, Beca produced the Te Kuiti Pedestrian Over-bridge Landings Concept Plan in September 2019.

Following on from the concept, this developed design set explores in more detail how the landings at either end of the bridge could be redeveloped to act as a key gateway and amenity facility for Te Kuiti and help to activate the spaces while incorporating cultural and contextual thinking.

This concept has been supported by various community groups to date and aligns with Council's vision for the Waitomo District, "Creating a better future with vibrant communities and thriving businesses", making the district an attractive place that people will want to work, live, play and visit.

**LEGEND**

- Reserve + green areas
- Community
- Industrial Area
- Town Centre
- State Highway
- Rail line
- Features
- Project Site



# CONTEXT



## LEGEND

-  Feature sites
-  Pedestrian movement
-  Existing pedestrian rail bridge crossing
-  NIMT (North Island Main Trunk Line)
-  Mangaokewa stream
-  At grade pedestrian crossing

400m Radius (5 minute walk)

WW2 memorial bridge

Town clocktower

Pavilion and Colin Meads panels

Skate park

Colin Meads Statue / iSite building

Shearer statue

Redwood park

Tokangani noho marae

WARD ST

KING ST E

ESPLANADE

CARROLL ST / SH3

TAUPIRI ST

SHERIDAN ST

TAWHANA ST

QUEEN ST

LAWRENCE ST

KING ST W




SEDDON ST

AWAKINO RD

# SITE ANALYSIS



## LEGEND

-  Feature sites
-  Ramp landing sites
-  Pedestrian movement at grade
-  Pedestrian movement on ramps/bridge

## CONSTRAINTS

- 1** Rora Street landing site fixed position as existing investment in amenity/structure/toilets makes any major changes unfeasible
- 2** Toilet building not likely to be moved, ramp goes behind it (potential perceived safety issue)
- 3** Existing electric rail gantry limits length of the pedestrian ramp - ideally provide a greater separation
- 4** Future use of building is unknown so bridge ramps will need to cater for future potential development
- 5** No footpath on Eastern edge of Carroll Road
- 6** Bridge to be located on existing alignment across rail line
- 7** Limited locations for alternative pedestrian crossings due to lack of forecourt areas with traffic movements

## OPPORTUNITIES:

- 1** Potential to add staircase part way down Rora Street ramp to provide choice for users
- 2** Visually connect town centre with bridge and landings by clearing out existing vegetation from Rora Street
- 3** Good views of the area and the railway line
- 4** Upgrade existing Carroll Street landing site into a more user friendly, multi-recreational site



# INSPIRATIONAL IMAGERY



Tokanganui noho marae - a key cultural landmark of Te Kuiti



View from Motakiora Pa site - illustrating how the hills surround the town



Traditional Maori weave pattern - an overarching theme to come out of the Town Concept Plan and consultation with iwi was weaving



An example of a local weaving pattern



Existing signage feature from the Motakiora Pa site



Example of a public walkway in Auckland with a cultural marker (pou whenua in this case) which provides an opportunity for people to make a connection to place



Example of a similar scale circular ramp from a pedestrian bridge in South Street, Willerton Leeming, Perth



Example of the use of colour that could be used to revive the existing skate park and areas under the bridge ramps

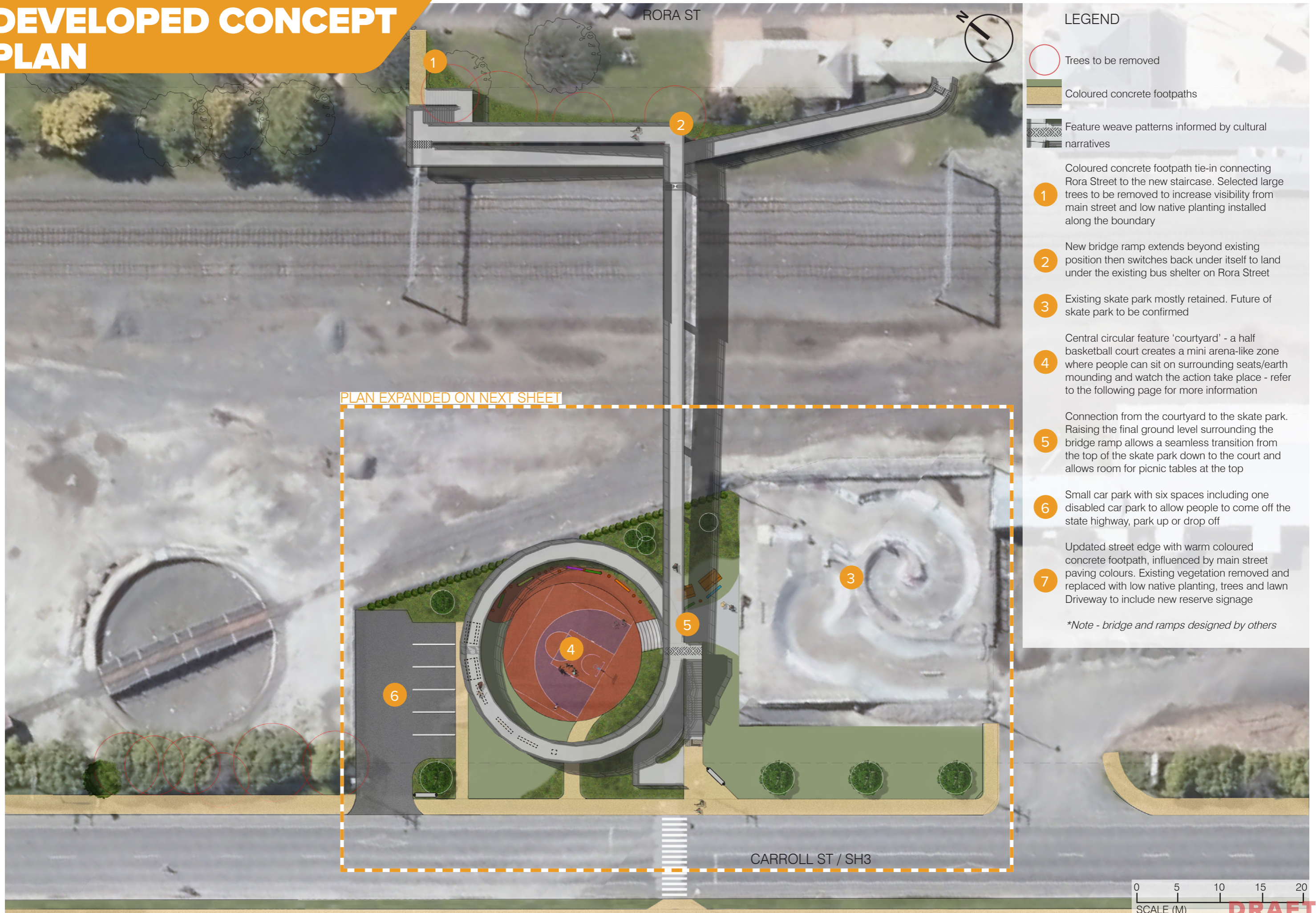


Example of the use of lighting on a bridge integrated into the handrails



An example of a local weaving pattern

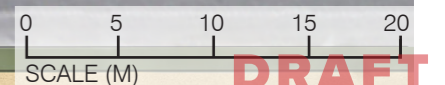
# DEVELOPED CONCEPT PLAN



## LEGEND

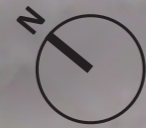
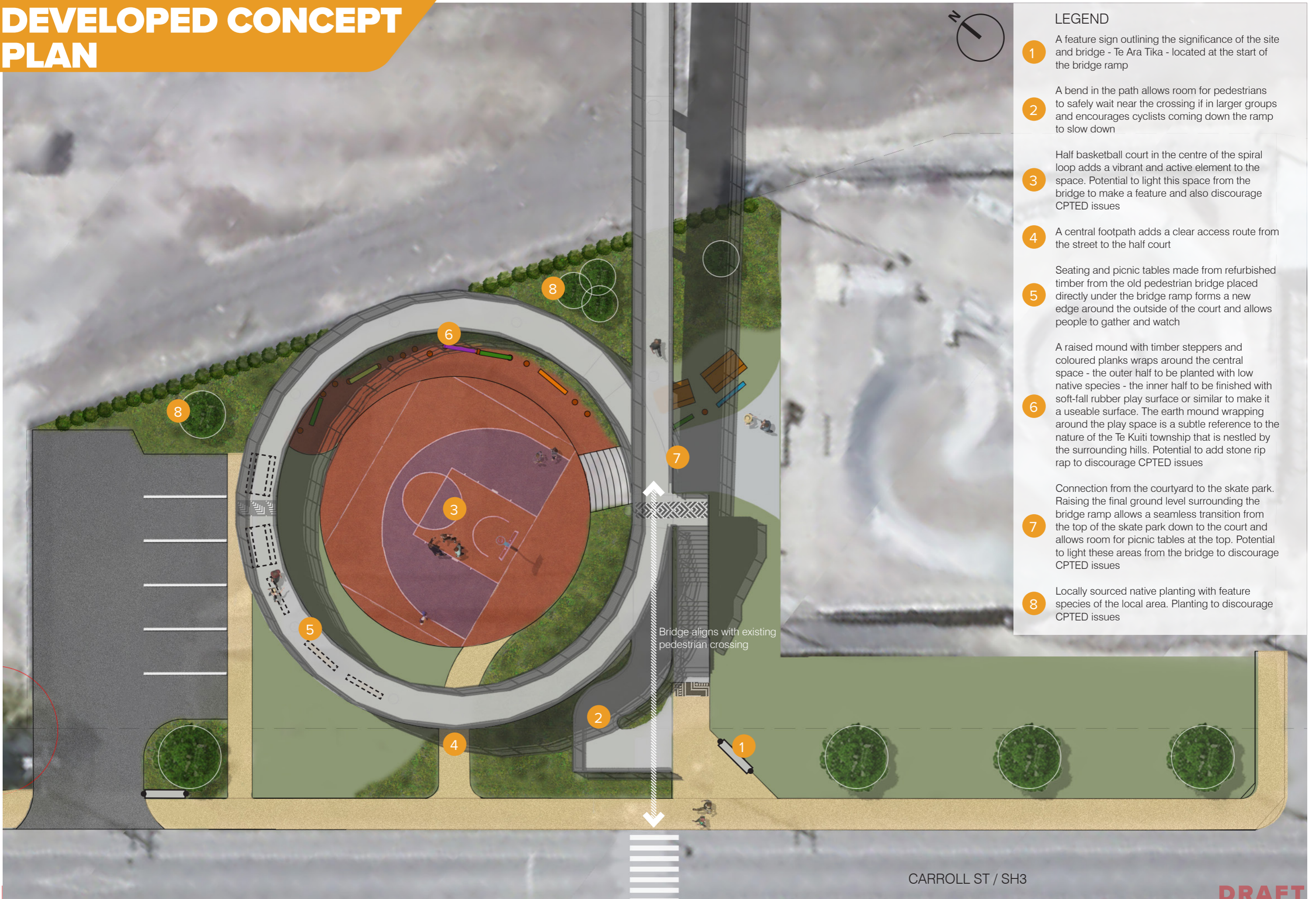
- Trees to be removed
  - Coloured concrete footpaths
  - Feature weave patterns informed by cultural narratives
- 1 Coloured concrete footpath tie-in connecting Rora Street to the new staircase. Selected large trees to be removed to increase visibility from main street and low native planting installed along the boundary
  - 2 New bridge ramp extends beyond existing position then switches back under itself to land under the existing bus shelter on Rora Street
  - 3 Existing skate park mostly retained. Future of skate park to be confirmed
  - 4 Central circular feature 'courtyard' - a half basketball court creates a mini arena-like zone where people can sit on surrounding seats/earth mounding and watch the action take place - refer to the following page for more information
  - 5 Connection from the courtyard to the skate park. Raising the final ground level surrounding the bridge ramp allows a seamless transition from the top of the skate park down to the court and allows room for picnic tables at the top
  - 6 Small car park with six spaces including one disabled car park to allow people to come off the state highway, park up or drop off
  - 7 Updated street edge with warm coloured concrete footpath, influenced by main street paving colours. Existing vegetation removed and replaced with low native planting, trees and lawn Driveway to include new reserve signage

*\*Note - bridge and ramps designed by others*



**DRAFT**  
Beca

# DEVELOPED CONCEPT PLAN



## LEGEND

- 1 A feature sign outlining the significance of the site and bridge - Te Ara Tika - located at the start of the bridge ramp
- 2 A bend in the path allows room for pedestrians to safely wait near the crossing if in larger groups and encourages cyclists coming down the ramp to slow down
- 3 Half basketball court in the centre of the spiral loop adds a vibrant and active element to the space. Potential to light this space from the bridge to make a feature and also discourage CPTED issues
- 4 A central footpath adds a clear access route from the street to the half court
- 5 Seating and picnic tables made from refurbished timber from the old pedestrian bridge placed directly under the bridge ramp forms a new edge around the outside of the court and allows people to gather and watch
- 6 A raised mound with timber steppers and coloured planks wraps around the central space - the outer half to be planted with low native species - the inner half to be finished with soft-fall rubber play surface or similar to make it a useable surface. The earth mound wrapping around the play space is a subtle reference to the nature of the Te Kuiti township that is nestled by the surrounding hills. Potential to add stone rip rap to discourage CPTED issues
- 7 Connection from the courtyard to the skate park. Raising the final ground level surrounding the bridge ramp allows a seamless transition from the top of the skate park down to the court and allows room for picnic tables at the top. Potential to light these areas from the bridge to discourage CPTED issues
- 8 Locally sourced native planting with feature species of the local area. Planting to discourage CPTED issues

Bridge aligns with existing pedestrian crossing

CARROLL ST / SH3



# CARROLL ST VIEW



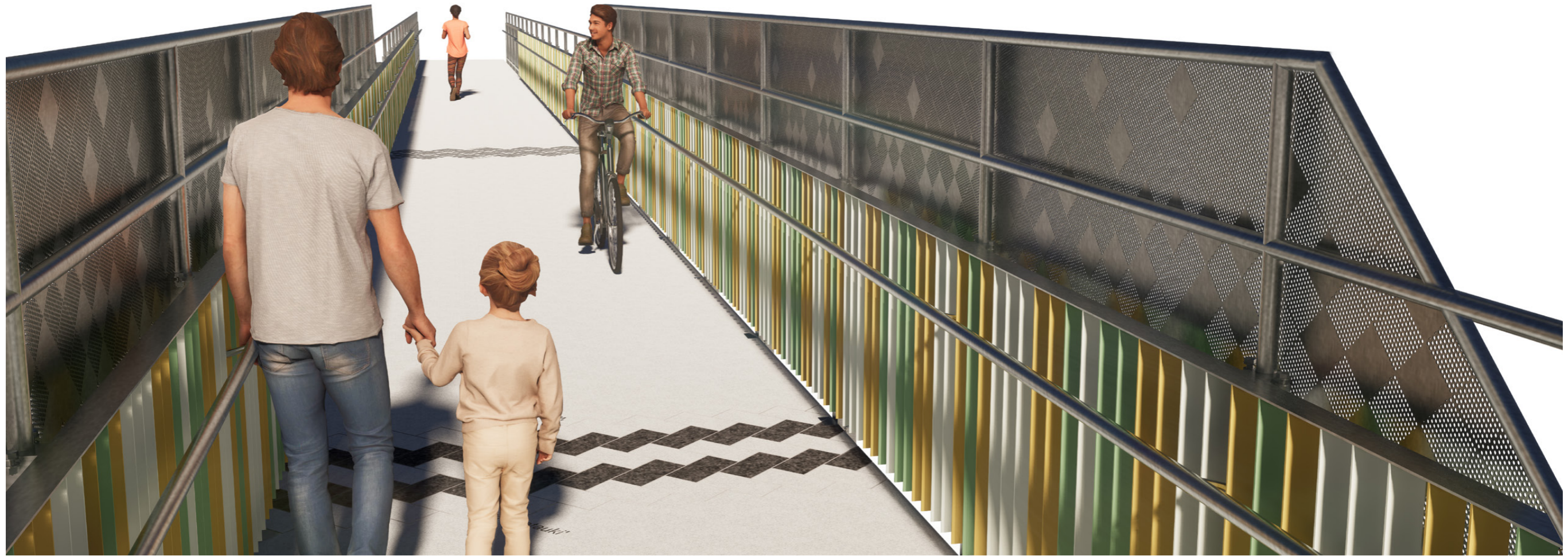
# CARROLL ST VIEW



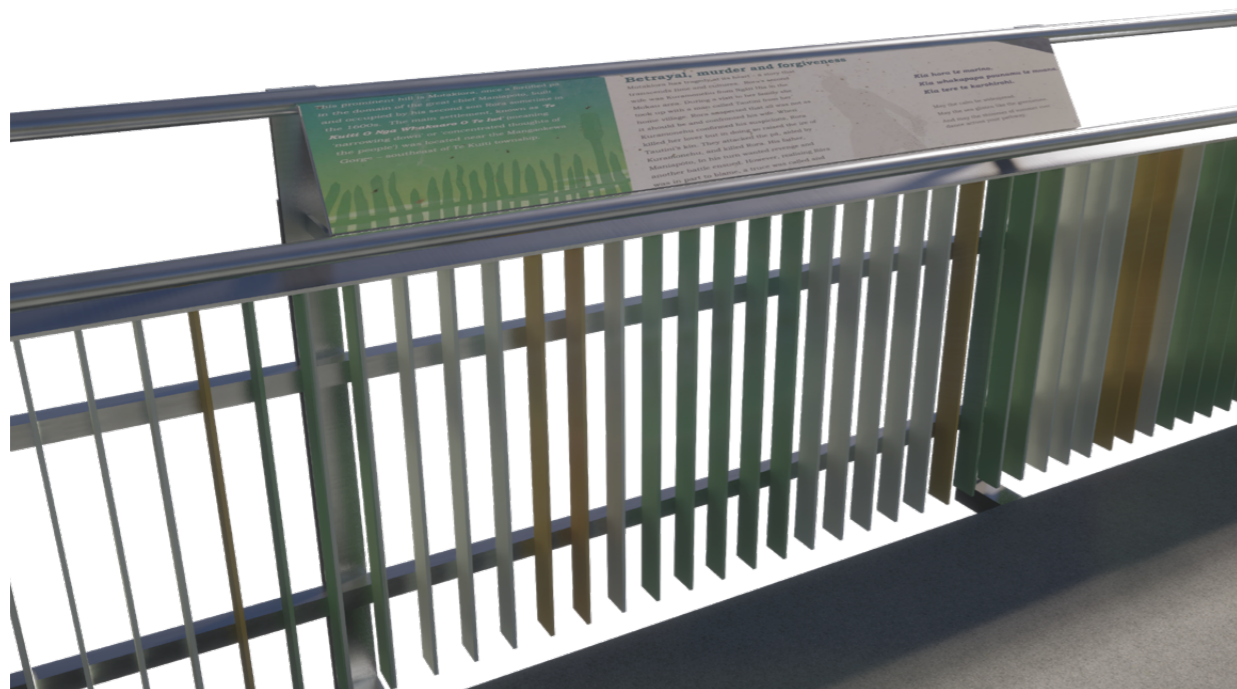
# RORA STREET VIEW



# BRIDGE VIEWS



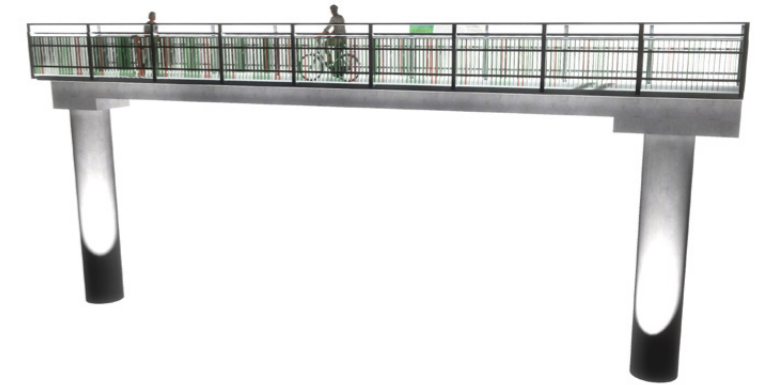
Small section of bridge with feature screen panels and coloured fins



Potential signage on the bridge - look and feel

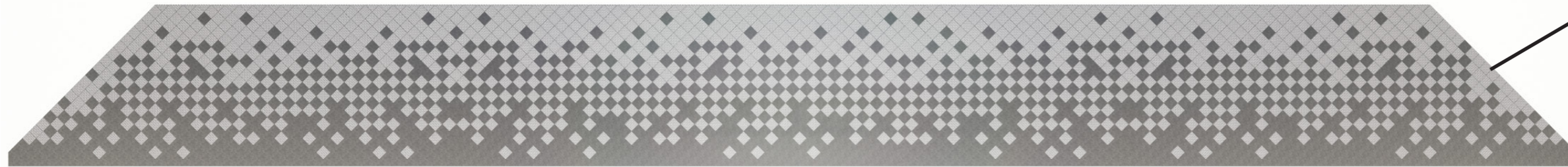


Potential lighting look and feel - lighting from the handrails



Potential lighting look and feel - lighting from the ground below

# BRIDGE VIEWS



Elevation of the proposed electrification protection screen - perforated steel panels with weave overlay



Influenced by the 'Takitahi' weave - sketch done by local hapu artist



Outlook from the bridge through the perforated steel panel screen